

Traffic Safety

For ALL Road Users



James Osborne, P.E.
Traffic Safety Programs Manager

DELDOT Safety Summit
April 17, 2024



Excellence in Transportation **Every Trip.**

We strive to make every trip taken in Delaware safe, reliable and convenient for people and commerce.

Every Mode.

We provide safe choices for travelers in Delaware to access roads, rails, buses, airways, waterways, bike trails and walking paths.

Every Dollar.

We seek the best value for every dollar spent for the benefit of all.

Everyone.

We engage our customers and employees with respect and courtesy as we deliver our services.

Safety



Topics

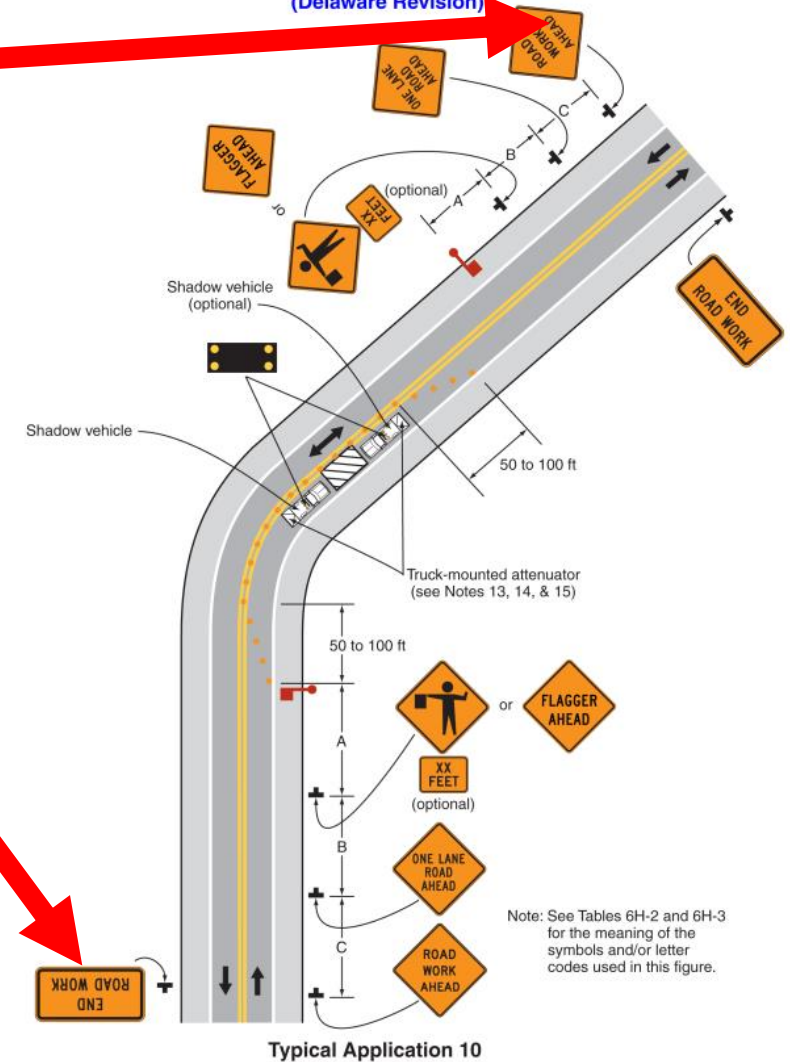
- Identify a Work Zone on a roadway
- Work Zone Accessibility
- Staging of Equipment and Workers
- High-Visibility Safety Apparel
- Traffic Safety in a Work Zone
- Traffic Safety for all

Work Zone

- Work Zone Area on a highway as provided by Title 21, Section 4105



Figure 6H-10. Lane Closure on a Two-Lane Road Using Flaggers (TA-10)
(Delaware Revision)



Note: See Tables 6H-2 and 6H-3 for the meaning of the symbols and/or letter codes used in this figure.

Work Zone

Types:

- Detours
- Utility
- Maintenance

SPECIAL SIGNS	
<p>48" 69" Upper Snuff Mill Road CLOSED AT Stone Block Row FOLLOW DETOUR 6" 6" 6" 6" 6" 6" C C C C C C C C</p>	
<p>48" 21" STARTING XX/XX/XX 6" C C</p>	
SPECIAL SIGNS NOTES	
<p>*DISPLAY (Y) ALONG WITH THE (Y1) PLAQUE, FOR 10 DAYS PRIOR TO THE IMPLEMENTATION OF DETOUR. (Y1) PLAQUE TO COMPLETELY COVER (Y) PLAQUE TO COMPLETELY COVER</p> <p>*FOLLOW DETOUR* LEGEND ON (Y) SIGN. UPON IMPLEMENTATION OF DETOUR, REMOVE (Y1) PLAQUE FROM (Y) SIGNS AND RELOCATE (Y) TO A LOCATION OUTSIDE OF CLOSURE AREA.</p> <p>*RETROREFLECTIVE PRISMATIC FLUORESCENT ORANGE BACKGROUND; BLACK LEGEND</p>	
<p>PREPARED BY DELDOT - TRANSPORTATION SOLUTIONS TRAFFIC SAFETY</p> <p><i>[Signature]</i> 12/21/2023 DATE</p> <p>THIS SEAL ONLY APPLIES TO THIS DETOUR SHEET</p>	
<p>CONCURRENCE FOR IMPLEMENTATION</p> <p>TRAFFIC SAFETY: <i>[Signature]</i> DATE: 12/21/2023</p>	
<p>CONTRACT: PROJECT NO. X</p> <p>T20227783 DESIGNED BY: DMW</p> <p>CHECKED BY: GAN</p>	
<p>NOT TO SCALE</p>	
<p>NORTH DISTRICT SMC</p>	
<p>DETOUR PLAN - VEHICULAR UPPER SNUFF MILL ROW</p>	
<p>SHEET NO. 4</p>	

SPECIAL SIGNS

48"
69"
Upper Snuff Mill Road
CLOSED AT
Stone
Block Row
FOLLOW
DETOUR
6" 6" 6" 6" 6" 6" C C C C C C C C

SPECIAL SIGNS NOTES

*DISPLAY (Y) ALONG WITH THE (Y1) PLAQUE, FOR 10 DAYS PRIOR TO THE IMPLEMENTATION OF DETOUR. (Y1) PLAQUE TO COMPLETELY COVER (Y) PLAQUE TO COMPLETELY COVER

FOLLOW DETOUR LEGEND ON (Y) SIGN. UPON IMPLEMENTATION OF DETOUR, REMOVE (Y1) PLAQUE FROM (Y) SIGNS AND RELOCATE (Y) TO A LOCATION OUTSIDE OF CLOSURE AREA.

*RETROREFLECTIVE PRISMATIC FLUORESCENT ORANGE BACKGROUND; BLACK LEGEND

LEGEND

GENERAL NOTES

- ALL TEMPORARY TRAFFIC CONTROL DEVICES ARE TO BE SUPPLIED AND MAINTAINED BY THE GENERAL CONTRACTOR AND SHALL BE IN COMPLIANCE WITH THIS PLAN AND THE DELAWARE MANUAL ON UNIFORM TRAFFIC CONTROL DEVICES (DE MUTCD) LATEST EDITION.
- SIGNS "W" THROUGH "O" AND "T" AND "Y", THE WORD "ROAD" SHALL BE CHANGED TO "RAMP", "BRIDGE" OR "BARRICADE" WHERE APPLICABLE.
- "P" TYPE 3 BARRICADES AT A ROAD CLOSURE SHALL BE PLACED COMPLETELY ACROSS THE ROADWAY, FROM CURB TO CURB, OR FROM EDGE OF ROAD TO EDGE OF ROAD, WITH THE STRIPES POSITIONED DOWNWARD TOWARD THE CENTER OF THE ROADWAY.
- BARRICADES SHALL BE A MINIMUM OF 6 FEET WIDE UNLESS DIRECTED BY THE ENGINEER.

DETOUR DESCRIPTION

DRIVERS WANTING TO GO WEST ON UPPER SNUFF MILL RD WILL GO SOUTH ON NINE GATES RD, TURN RIGHT ON SNUFF MILL RD, TURN RIGHT ON SR 82, BACK TO UPPER SNUFF MILL RD.

DRIVERS WANTING TO GO EAST ON UPPER SNUFF MILL RD WILL GO EAST ON SR 82, LEFT ON SNUFF MILL RD, LEFT ON NINE GATES RD BACK TO UPPER SNUFF MILL RD.



DELDOT
DELAWARE DEPARTMENT OF TRANSPORTATION

Accessibility



DELDOT
DELAWARE DEPARTMENT OF TRANSPORTATION

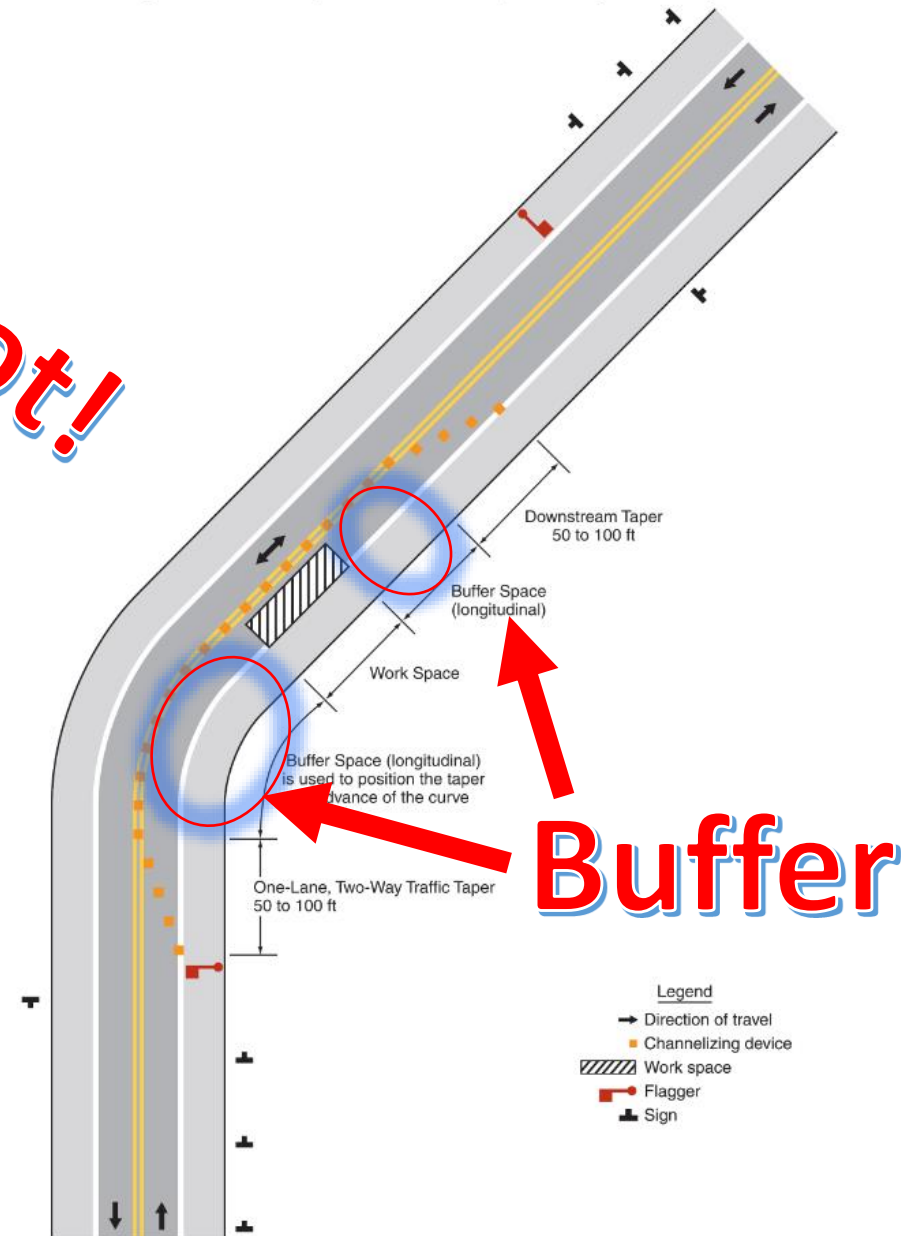
Staging Equipment and Workers



Figure 6C-3. Example of a One-Lane, Two-Way Traffic Taper

Where not!

Staging of Equipment and Workers



Staging of Equipment and Workers

Where not!



Table 6G-2. Storage of Equipment (Delaware Revision)

Road Type	Distance (L) from Edge of Traveled Way	Posted Speed Limit or 85 th -Percentile Speed	Minimum Required Channelizing Devices
Equipment and Non-flammable Materials			
Interstate, Freeway, or Expressway	L ≤ 30 ft	All	Temporary traffic barrier
	L > 30 ft	All	Drums
All other roadways	0 ≤ L ≤ 10 ft	25 mph or less	Drums
		More than 25 mph	Temporary traffic barrier
	10 ft < L ≤ 30 ft	25 mph or less	None
		More than 25 mph	Drums
L > 30 ft	All	None	
Flammable Materials (fuel, propane, etc.)			
Interstate, Freeway, or Expressway	L ≤ 30 ft	All	Temporary traffic barrier
	L > 30 ft	All	Drums
All other roadways	L ≤ 30 ft	All	Temporary traffic barrier
	L > 30 ft	All	None

High-Visibility Safety Apparel & PPE (Personal Protective Equipment)

3M Personal Safety Division



Garment Type	Type "O" (Off-Road)	Type "R" (Roadway)	Type "R" (Roadway)	Type "P" (Fire, Police, EMS Personnel)	Type "P" (Fire, Police, EMS Personnel)	Supplemental Items (Garments with Legs, including Gaiters)
Performance Class	Class 1	Class 2	Class 3	Class 2	Class 3	Class E
Background Material Amounts	217 in ²	775 in ^{2*}	1240 in ^{2**}	450 in ²	775 in ²	465 in ²
Retroreflective Material Amounts	155 in ²	201 in ²	310 in ²	201 in ²	310 in ²	109 in ²
Width Minimums of Retroreflective Materials	1"	1.38" (1" for split trim designs)	2" (1" for split trim designs)	2" (1" for split trim designs)	2" (1" for split trim designs)	2" (1" for split trim designs)



DELDOT
DELAWARE DEPARTMENT OF TRANSPORTATION

Traffic Safety in a Work Zone

Guidance & Educate

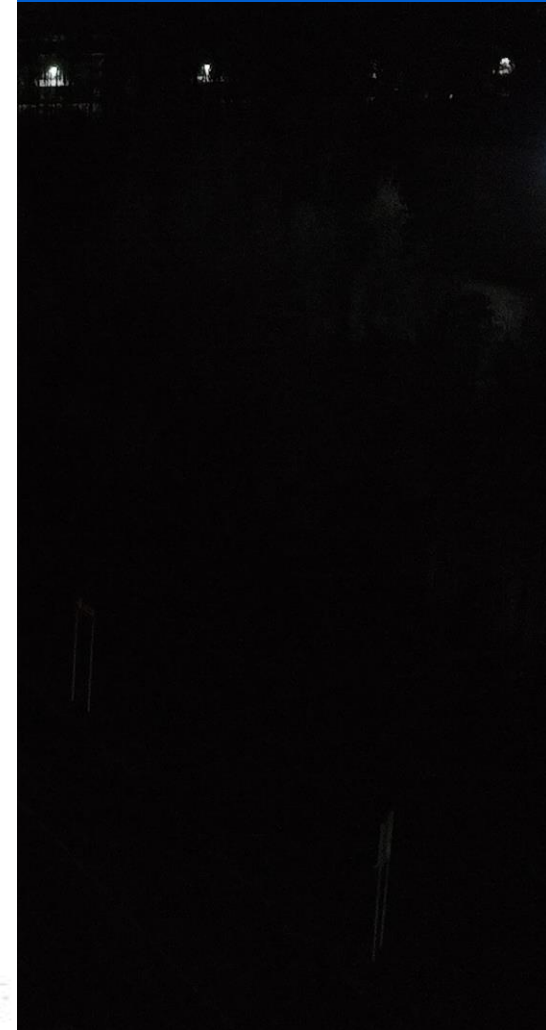
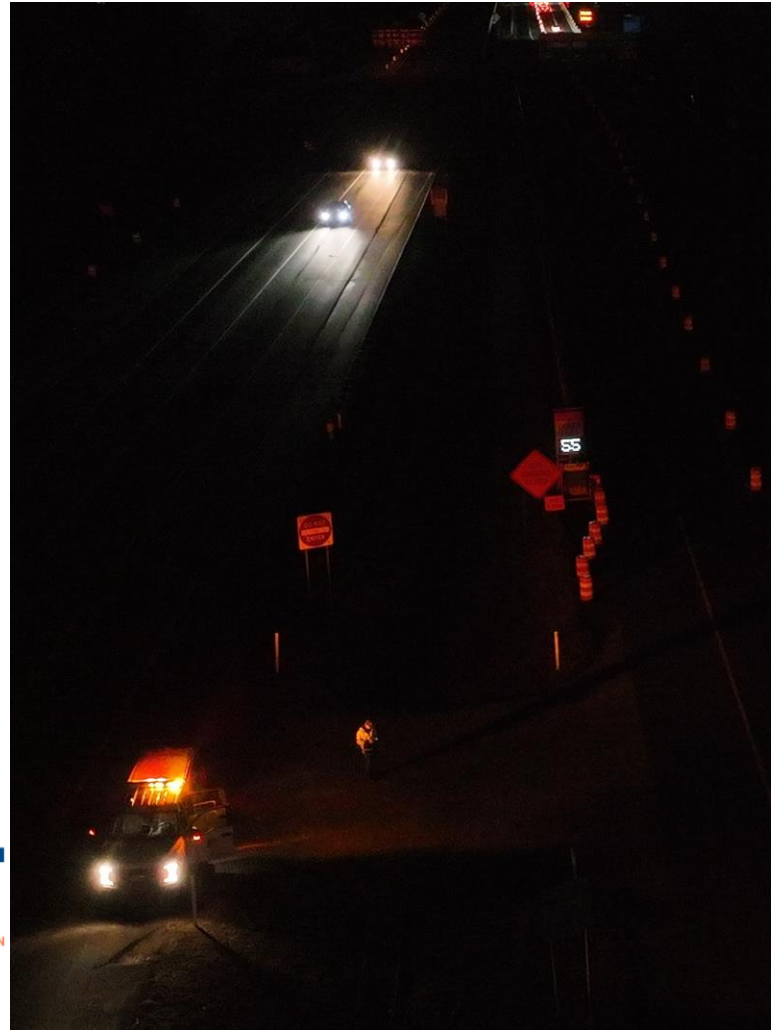
Construction



Traffic Safety in a Work Zone

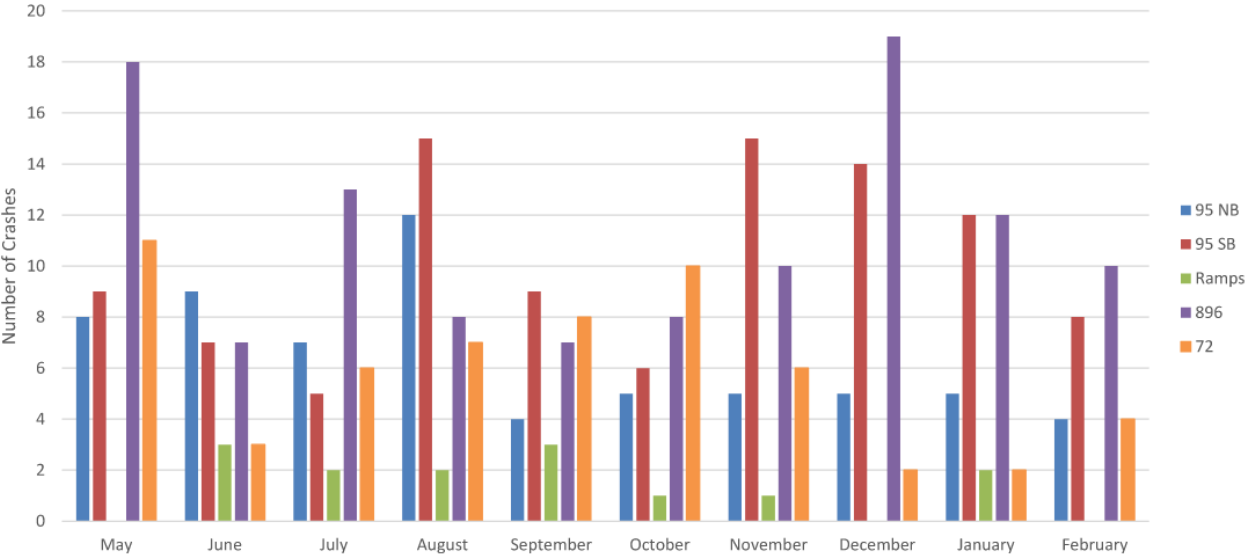
Construction

- Radar Speed Feedback Sign (RSFS)



Traffic Safety in a Work Zone

Crashes by Month
(5.1.23 - 2.29.24)



Enforcement

- Active limits of the work zone

Work Zone Related Crashes (5/1/23-2/29/24)			
Roadway	Total Crashes	Cited as Work Zone Related	Not Cited as Work Zone Related
I-95 NB	64	10	54
I-95 SB	100	5	95
Ramps	14	4	10
SR 896 (NB & SB)	111	6	105
SR 72 (NB & SB)	58	9	49



Traffic Safety

During
&
*After



DELDOT
DELAWARE DEPARTMENT OF TRANSPORTATION

NCAM108

NCAM108 - DE-1 / DE-299 11:01:28 AM (GMT-4:00) 4/4/2024

Traffic Safety

Incident
Response
Safety &
technology



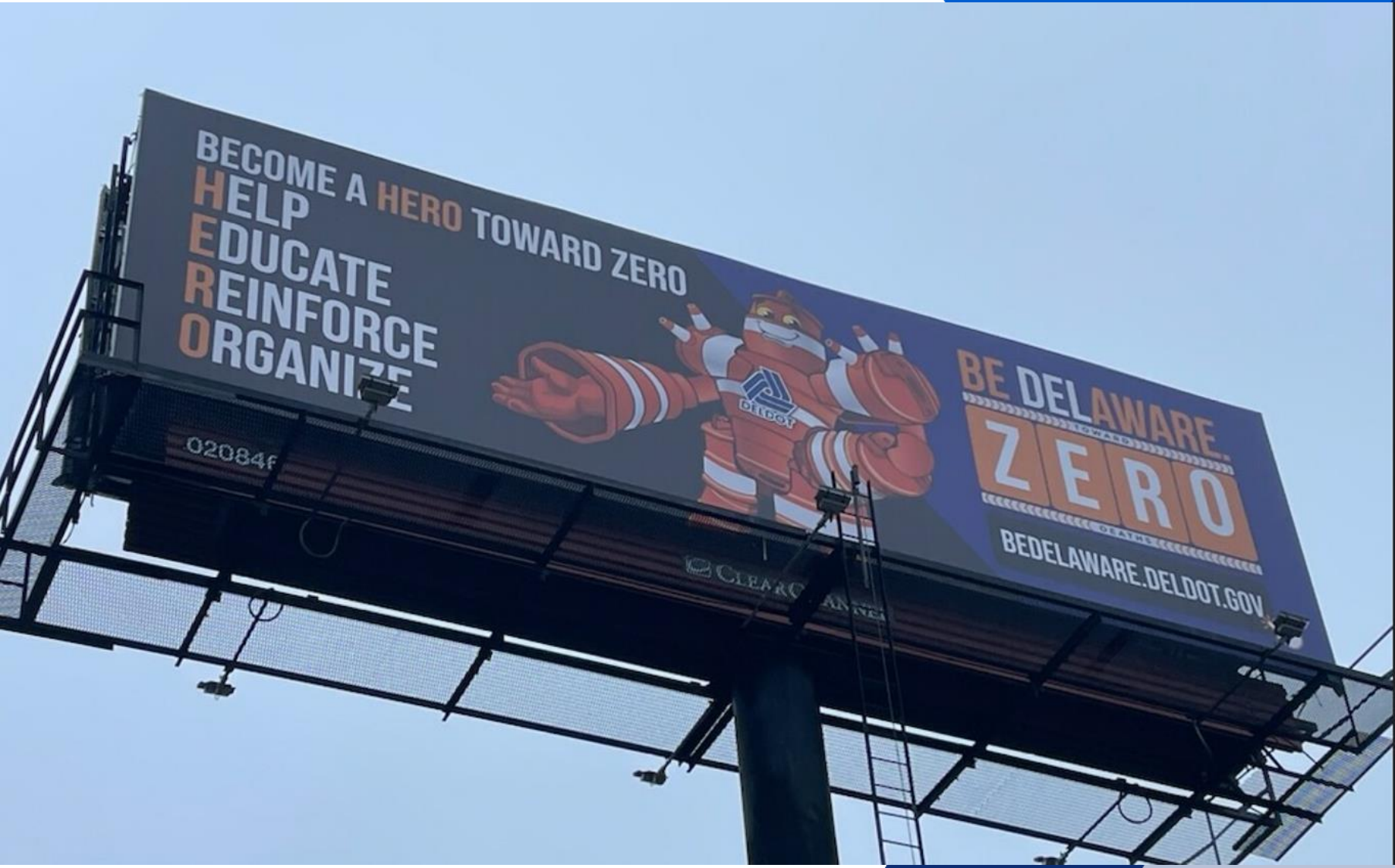
DELDOT
DELAWARE DEPARTMENT OF TRANSPORTATION

Temporary Traffic Work Zone

- Delaware Manual on Uniform Traffic Control Devices (DE MUTCD)
- Part 6: Temporary Traffic Control



We can all Participate





**QUESTIONS &
COMMENTS**



THANK YOU!



<https://linktr.ee/delawaredot>